

reaching out

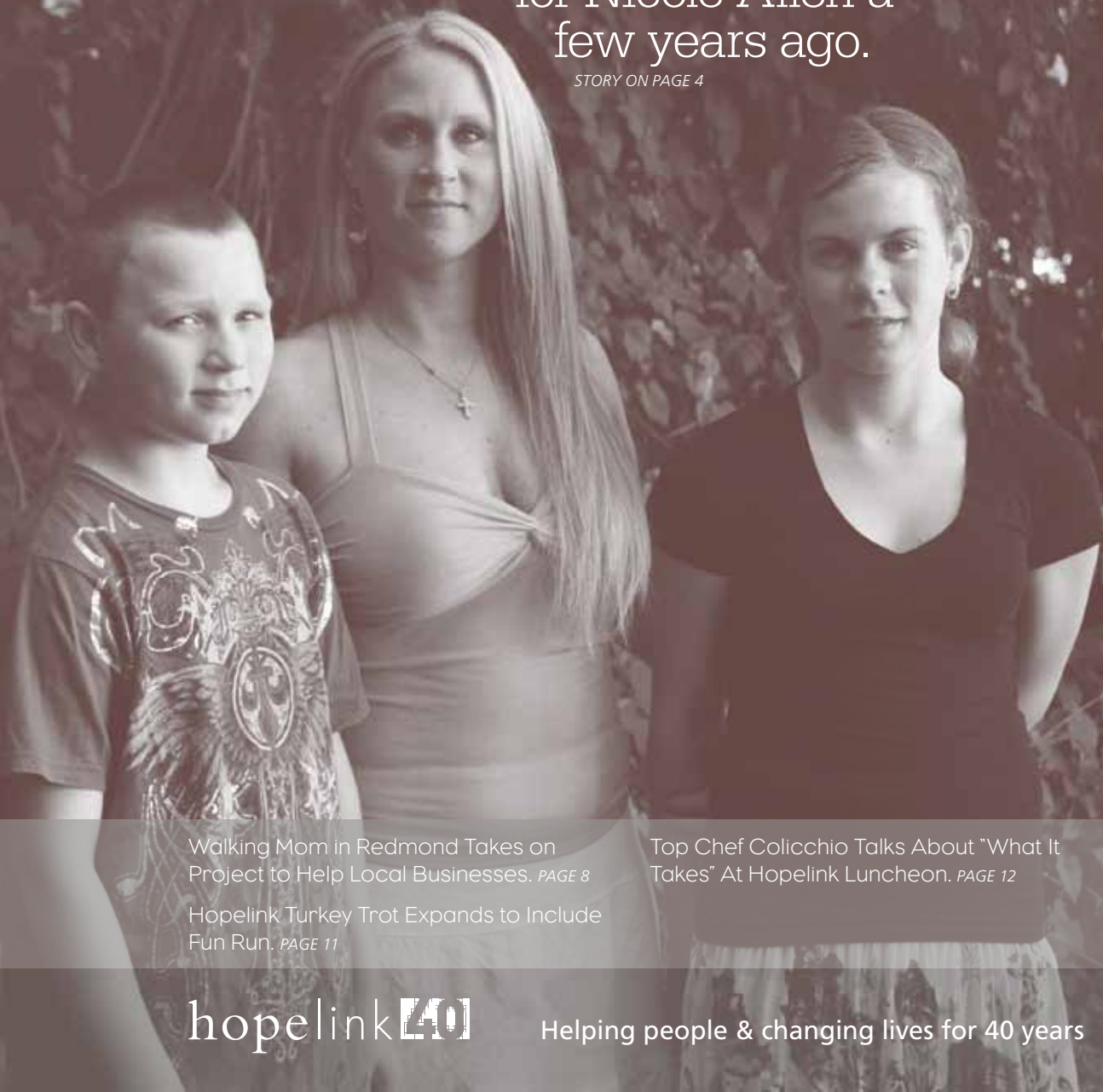
The Quarterly Newsletter of Hopelink

AUTUMN 2011 | Vol. 31, No. 2

Life Was Good

for Nicole Allen a few years ago.

STORY ON PAGE 4



Walking Mom in Redmond Takes on Project to Help Local Businesses. *PAGE 8*

Hopelink Turkey Trot Expands to Include Fun Run. *PAGE 11*

Top Chef Colicchio Talks About "What It Takes" At Hopelink Luncheon. *PAGE 12*

hopelink **40**

Helping people & changing lives for 40 years

Hopelink's mission is to promote self-sufficiency for all members of our community; we help people make lasting change.

Credits

Reaching Out is a quarterly publication of Hopelink. *All Rights Reserved.*

EDITOR: Glen Miller

DESIGN FIRM: Wolken Communica

CONTRIBUTORS: Kris Betker, Samantha Pak
Marilyn Mason-Plunkett

COVER PHOTOGRAPHY: Scott Aitken

BOARD OF DIRECTORS

John (Pat) Vaché
Chair

José Piñero
Board Vice-chair

Andy Goerdel
Board Treasurer

Thomas Tanaka
Board Secretary

Jason Clark
Jennifer Davies
Jonathan Dickenson
Jennifer Filipovich
Roger Goodman
Kathy Lambert
Larry C. Martin
Marla Mellies

Michael Nesteroff
Gail J. Rasmussen
Dianne Schultheis
Larry Springer
Ana (Lila) Valdivieso
Lindsay Williams
Scott Wallin
Peter Wilson

Hopelink Directory

For 40 years, Hopelink has served homeless and low-income families, individuals, children, seniors and people with disabilities. Hopelink services include food, shelter, homelessness prevention, family development, transportation, adult literacy and employment services. Hopelink's mission is to promote self-sufficiency for all members of our community; we help people make lasting change.

For more information about Hopelink and its services, call 425.869.6000 or visit the website at www.hope-link.org.

ADMINISTRATION

425.869.6000
P.O. Box 3577
Redmond, WA 98073
10675 Willows Road Northeast
Suite 275
Redmond, WA 98052

BELLEVUE CENTER

425.943.7555
14812 Main St.
Bellevue, WA 98007

KIRKLAND/NORTHSHORE CENTER

425.889.7880
11011 120th Avenue NE
Kirkland, WA 98034

REDMOND CENTER

425.882.0241
16725 Cleveland Street
Redmond, WA 98052

SHORELINE CENTER

206.440.7300
15809 Westminster Way N
Shoreline, WA 98133

SNO-VALLEY CENTER

425.333.4163
31957 E. Commercial St.
Carnation, WA 98014

ADULT EDUCATION

425.889.7880

HOUSING

425.556.9289

LIHEAP AND PSE HELP

Energy Assistance
800.348.7144

VOLUNTEER PROGRAMS

425.869.6066

COMMUNITY SPONSORED EVENTS

425.883.8430

HOPELINK TOURS

425.869.6000

TRANSPORTATION

General: 425.943.6789
Transportation Brokerage:
800.923.7433

Metro DART Reservations:
866.261.3278

Interpreter Services Brokerage:
425.378.7977

TDD/TYY Line: 800.246.1646

www.hope-link.org



Do you Twitter? Are you on Facebook? Hopelink is too. Let your friends, family and colleagues know that you support the work of Hopelink. Join us by searching Hopelink on these sites.



Hopelink Calendar of Events

Monday, October 17

Hopelink's 16th Annual Reaching Out Benefit Luncheon

Meydenbauer Center, Bellevue. *Details on page 12*

Sunday, November 20

Turkey Trot Walk and Run for Hopelink

Kirkland Marina Park.
Details on page 11



Hopelink Relocates Redmond Offices and Emergency Services Center in Redmond

After two decades as a founding partner at Redmond's multi-tenant nonprofit Together Center, formerly the Family Resource Center, Hopelink has moved both its administrative offices and emergency services center.

Over the summer, the social services agency's administrative offices moved to 10675 Willows Road NE, Suite 275, in Redmond. The Redmond Emergency Services Center – including the expanded food bank – will remain at the current location at the Together Center until October 3, when it will relocate to 16725 Cleveland Street in Redmond with expanded services.

The Redmond food bank serves more than 1,000 people every month and is one of five Hopelink Emergency Service Centers in north and east King County.

Hopelink President and CEO Marilyn Mason-Plunkett said the moves will enable the agency to better serve the future needs of community. "After many years at our present location, we simply outgrew our space. We made the decision to move our Redmond Emergency Services Center to a much larger space that will enable us to offer expanded services and better serve our clients. This higher-profile space has a dedicated parking lot and better access to public transportation, and the additional space will enable us to grow with the needs of Redmond."

Hopelink Administrative Office

10675 Willows Road NE, Suite 275, Redmond, WA

The Redmond Emergency Services Center

16725 Cleveland Street, Redmond, WA

Life Was Good



Life was good for Nicole Allen a few years ago. An ambitious and hard-working single mom, Nicole loved her job in the jewelry business, working fulltime at Helzberg Diamonds at Alderwood Mall and content to provide a secure upbringing for her two young kids.

Nicole had been the epitome of the “pull yourself up by the bootstraps” kind of girl growing up in Everett. Her father left when Nicole was 2, and by the fifth grade – while her friends were living the happy-go-lucky life most children take for granted – young Nicole was already helping raise her siblings.

She got a job at Dairy Queen when she was 15-1/2, and by 17 was working 40 hours a week as a manager at Mr. Rags. When the clothing store went out of business, Nicole didn’t miss a beat; moving on to other positions with other retailers and excelling at her work.

Everything changed one day in August 2009. Nicole had a seizure at work, and woke up surrounded by paramedics. Nothing like that had ever happened to her before. It was terrifying.

But the self-described stubbornly independent woman refused to believe the seizure would change her life. Her illness – later diagnosed as non-epileptic seizure disorder – had other ideas.

After initially taking temporary leave, Nicole was forced to resign from the job she loved in September 2009.

Nicole says she cried when she found out she could no longer work.

For the first six months after her diagnosis, Nicole was pretty depressed. She cried a lot and felt extremely isolated. Early on she had a seizure every other day, which meant she couldn’t drive and couldn’t be alone.

The usually resilient mom said before she got sick, she saw things in a different light. Challenges were meant to be overcome. “Life flips you upside down when something like this happens,” she said. “It’s like you’re a prisoner in your own body.”

But as challenging as it was to confront her illness, Nicole said the hardest thing was helping her kids handle the stress and confusion. Tyler, now 10, and Shay, 11, were scared. They would ask, “Mom, are you going to die?”

“I’ve always been a caretaker; a fixer,” she said. “I was the one who would say, ‘it will all work out – there’s always a light at the end of the tunnel.’ But I hit a wall. I’ve got kids. I thought, ‘what are we going to do?’”

Nicole said it felt like the family was living in a black hole. The self-sufficient caretaker had met her match. She needed help.

A former co-worker suggested that Nicole contact Hopelink. It wasn’t easy for her to ask for assistance, but she knew she had to find a way to make sure her kids had enough to eat.

“Hopelink was my savior in many ways,” Nicole said. “What little money I had went to bills, leaving very little for food.” She was able to use the food bank for a number of months; stretching what she received into good, healthy meals for her family.

Hopelink also helped with the family’s energy bills and when the holidays rolled around, Nicole said Hopelink gave her kids a Christmas they would not have had otherwise.

“Hopelink took that load off of us,” she said. “I wouldn’t have been able to make it otherwise.”

In time, the bootstraps girl who always wanted to work got restless at home, and started her own business. Years spent working in the jewelry industry sparked an interest in creating her own works of art, and Nicole began designing necklaces, bracelets and earrings to sell at local markets and online.

She has carpal tunnel syndrome so threading the colorful beads and twisting the wires can be painful, but Nicole shrugs that off. She talks to people buying her jewelry about her struggle and about Hopelink and

Energy Assistance

Hopelink helps low-income renters and homeowners pay their heating bills through the federally funded Low Income Home Energy Assistance Program (LIHEAP) as well as the Puget Sound Energy HELP Program (PSE HELP). The LIHEAP Program typically runs from November through May, or as funds remain available. PSE HELP operates from October through September (year-round), or as funds remain available.

Holiday Gift Rooms

Now in their 16th year, Hopelink’s annual holiday gift rooms enable homeless and low-income families, seniors and people with disabilities to “shop” for toys and gifts during the holiday season. Each food bank location hosts one of the rooms, which are stocked with donations from local toy drives, corporate-sponsored giving trees, and individual contributions. Hopelink volunteers act as personal shoppers, helping each family select gifts based on a point system that allows every child either several smaller toys or one or two larger items.

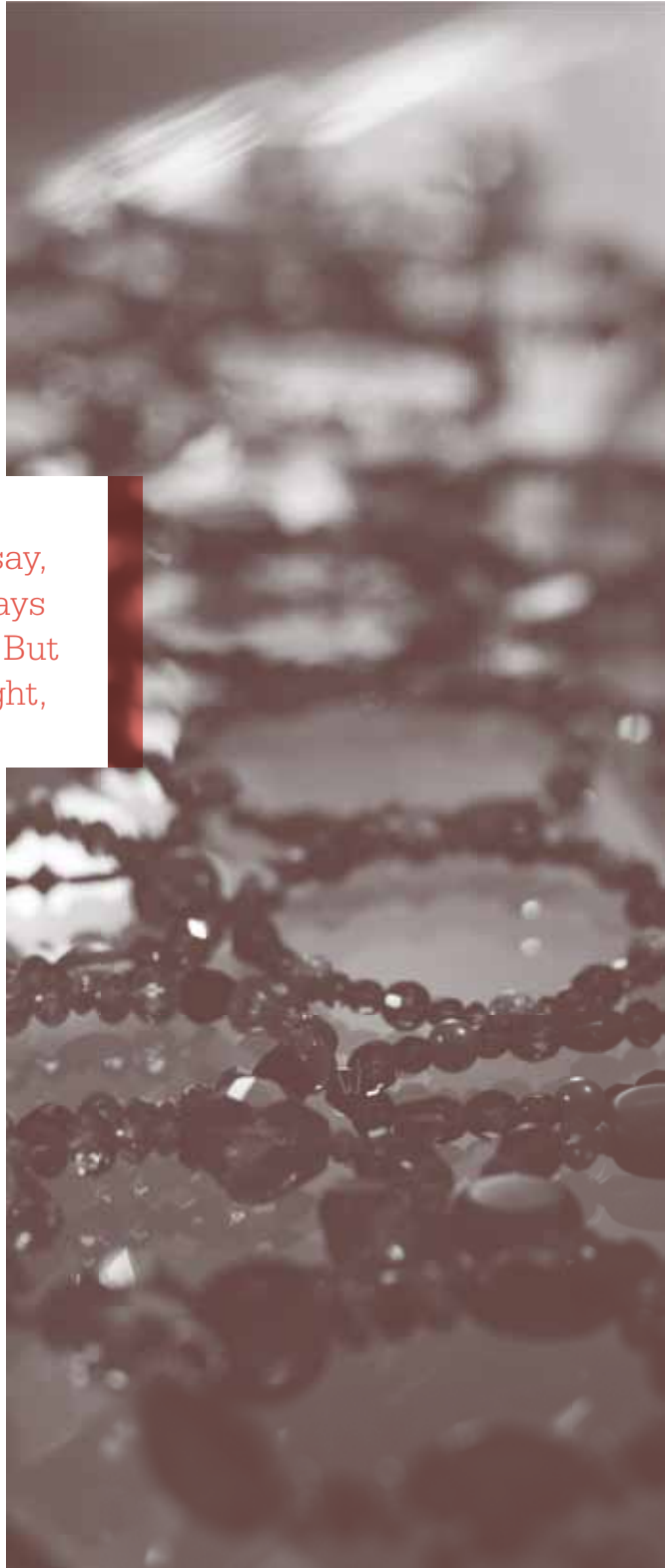
Food Banks

Hopelink’s five food banks offer food from every nutritional group – as well as baby items and personal care products – during a variety of days and times throughout the month. There are special distribution times for seniors and people with disabilities, and evening hours for working families. Hopelink also makes weekly deliveries to clients who are homebound.

says she is amazed they are impressed by her resilience. She says it just isn't a big deal to her – that's the way she has always lived her life.

Since discovering her seizure disorder Nicole also has been diagnosed with fibromyalgia and myofascial pain syndrome. Although her seizures have slowed to two or three per month, managing her pain is an ongoing challenge.

With all she's been through, Nicole is still looking for ways to help others. She is writing a book about her experiences and has a 4-inch notebook filled with clippings and research studies and a journal of what she's going through – with the goal of assisting others who are in the same boat but may not have the support system she has, or the energy or drive to do research on their own.



“ I've always been a caretaker; a fixer, I was the one who would say, 'it will all work out – there's always a light at the end of the tunnel.' But I hit a wall. I've got kids. I thought, 'what are we going to do?' ”

And she is committed to giving back for the help she has received, donating part of her jewelry-making proceeds to Hopelink and others who need help. She says she would like to open a shop of her own, where she could help other artists display their work and host events to help parents pay medical and other expenses.

“I want other women who have struggled like I have to know they're not alone, and that there is a light at the end of the tunnel,” she said.

Nicole is convinced the tough times have brought her family even closer together, although they have never really liked being apart. Throughout the ups and downs and struggles they seem to find security in being together.

The family has regular movie and game nights – Yahtzee is a favorite, and they like playing miniature golf. Both kids are busy and love school, and are very accomplished. Son Tyler enjoys putting together model cars, and like his mother, is creative and artistic. He loves building things and Nicole says she can picture him as an architect. Daughter Shay is an athlete who plays a mean first base in softball and would like to pursue volleyball. Tall like her mom, Shay thinks she might take on basketball one of these days.

For all she's been through, Nicole believes her future is “nothing but good. There's always someone worse off,” she said. “A lot of people live their whole lives without what we have. We are very blessed.”

Who's Helping Hopelink

Expedia's annual CANstruction event went global this year with Expedia offices around the world doing CANstruction installations to benefit their respective food banks – and it all started right here with Hopelink and Expedia in Bellevue. This year eight great teams created some memorable art and collected more than \$10,000 in donations and a whole lot of food to help the hungry in our community.

The School Supply Community Coalition: Boeing Bluebills, St. Jude's, Kirkland Interfaith Network and AtWork!, along with support from Congregations for Kids, Northshore School District and many donors and volunteers donated, sorted and packed school supplies for thousands of elementary school children in north and east King County schools. Due to their efforts, many more children will start school ready to learn and feeling proud of their new supplies.

Through her work, **Gem Salon, Lisa Avery** coordinated haircuts and colors for Hopelink clients. Stylists provided 32 haircuts, 17 partial foils and 3 all-over colors to Hopelink clients in our Family Development and Transitional Housing programs. A new haircut can be vital to self-esteem in looking for a new job.

The 360 students at Highland Terrace Elementary School in Shoreline may be young, but they are already making a significant difference in their community. Students held a walkathon fundraiser for Hopelink that collected \$6,586.25 – the largest amount ever raised by an elementary school.

In two hours, a team of seven from **Microsoft** came to Hopelink's Redmond food bank and broke down bulk items of salt, sugar and rice into easier to hand out bags. They also created 100 bags for End Summer Hunger families. Their work made lines in the food bank run more smoothly and created a better experience for clients.

RED-SPOKE, sponsored by the Redmond Rotary, invited cyclists to take a 300-mile bicycle tour across Washington State from Redmond to Spokane, with proceeds going to Hopelink's transitional housing program and the Little Bit Therapeutic Riding Center.

At five grocery stores on Community Service Day, **Windermere Real Estate of Redmond** brought in 1,649 pounds of food to help End Summer Hunger in our community.

The Hacker Group, a Seattle-based advertising agency, organized their staff to raise school supplies and filled over 800 backpacks.

Molbaks invited customers to bring donations of home grown fruit, vegetables & herbs to help stock Hopelink food banks. Every weekend in August and September, Molbaks accepted donations at their Woodinville store. Over the past two summers, Molbak's and their customers have donated more than 2,200 pounds of fresh produce to Hopelink.

The RAC to Redhook Run, sponsored by the Redmond Athletic Club and Woodinville's Red Hook Brewery invited runners and residents from around the county to run or walk the 4.5 miles from the Redmond Athletic Club to the Red Hook Brewery along the Sammamish River Trail, stopping approximately each mile to participate in a fitness challenge. Proceeds benefitted Hopelink programs.

Hopelink was included in an August **Groupon Deal**, and the generous participants helped us raise more than \$3,000 to help End Summer Hunger.

Seattle Sounders soccer players and fans teamed up for two hours at the Redmond food bank, bagging 1,400 pounds of bulk rice and oats for Hopelink's emergency food kits. The event was part of the Sounders' "United We Serve" community service project and resulted in 3,900 bags of dry goods for the kits.

Walking Mom in Redmond Takes on Project to Help Local Businesses

Article by Samantha Pak, reprinted with permission of the Redmond Reporter

As a regular walker, Melissa Goss-Halbert sees things the average driver may often miss.

The Montana native moved to Redmond about two and a half years ago and as she has walked her way around town, she has seen firsthand how local businesses have been affected by the economic recession.

"I've heard so many stories about the hardships," Goss-Halbert said.

After seeing business after business close, reduce their hours or open on an appointment-only basis, she decided to do something about it with "The Walking Mom Project."

This endeavor is Goss-Halbert's way of doing her part to help the local economy. For the last few weeks, she and her two-year-old daughter have been visiting businesses within a five-mile radius of the Bella Bottega area — where they live — to create goody bags filled with coupons, deals and flyers for customers. For businesses who couldn't afford to print flyers, Goss-Halbert has offered to cover the cost herself.

"I want to do right by the people around me and in the community," she said.

As of Monday, 15 businesses are participating in the project: Great Play, A Custom Stitch, Trade Chic, The Closet, SoulFood Books, Hancock's Bakery, Madison's on 83rd, Pacific Music, Ben Franklin Crafts and Frames, Wildflour Gluten-Free Bakery, By the Way Coffee, Tree Top Toys, Vitamin Life, Ashleigh's Attic and McDonald's Book Exchange.

Goss-Halbert will also include her own flyer encouraging people to fill the plastic shopping bags, which are provided by QFC at 8867 161st Ave. N.E. in Bella Bottega, with food items to donate to the Hopelink's food bank in Redmond. Food can also be dropped off at QFC.

Goss-Halbert plans to distribute between 250 and 500 bags beginning Friday at the Arts in the Park event at Redmond City Hall at 15670 NE 85th St. at 7 p.m. After that, she will distribute the bags to people she bumps into while she walks around town. Her goal is to distribute about 50 bags per day.

"I'm just going to talk to as many people as I can," she said.

Goss-Halbert said by walking everywhere, she sees all sorts of businesses that people driving by may not notice. She can also take the time to really talk to and learn about shopkeepers and people she passes by on the street. The 35-year-old has lived in various areas around the country, but said it wasn't until she moved to Redmond that she began building these relationships.

"I've never really known my neighbors till I got to Redmond," she said.

And while she has enjoyed getting to know her neighbors, it's not always under the best circumstances as she has met people who have been on the verge of closing up shop for good. Goss-Halbert has also heard stories about business owners whose families have lost everything during the recession.

“Goss-Halbert said through Hopelink, she has met people from all walks of life, including some one would never expect to utilize the nonprofit. It was during this time when her family had to watch their budget that Goss-Halbert got the idea for “The Walking Mom Project.”



"How sad is that?" she asked. "It's heartbreaking."

Goss-Halbert and her family have faced hard times as well. About a year ago, her husband lost his job working at a tech company in Bellevue. To help them through this time, they went to Hopelink in Redmond, which offers various human services for those in need.

Goss-Halbert said through Hopelink, she has met people from all walks of life, including some one would never expect to utilize the nonprofit.

It was during this time when her family had to watch their budget that Goss-Halbert got the idea for "The Walking Mom Project."

She was visiting Great Play, a gym for children, to tell them she had to cancel her daughter's membership, when the owner told Goss-Halbert that if she helped them distribute flyers for advertising, the membership would be covered. She said this simple act of kindness had a tremendous effect on her.

"It made a world of difference," Goss-Halbert said. "It gave me the idea of, 'Why can't I give back to her and give back to the community by doing the same thing?'"

This time around, Goss-Halbert is distributing the flyers and coupons just to help out and although she said many businesses were enthusiastic about her project, she was faced with skepticism. She said a number of people asked what she thought she could do since she is just one individual.

But this has not deterred Goss-Halbert. She said she understands she can't stop every business from closing, but she can do her part in helping.

Goss-Halbert said even if people aren't able to make any purchases, she encourages them to get out and meet their neighbors and the local business owners.

"It's all about going out there," she said. "This place is amazing. It really makes you appreciate the community you have."

President/CEO's Desk

Marilyn Mason-Plunkett

For 40 years, Hopelink has been on the front lines in our community, helping families caught in a crisis put food on the table, feed their children, heat their homes, and keep a roof over their heads. It is vital work, and I am proud of what we, together with the support of the broader community, have accomplished. Yet nothing would make

me happier than to see the need for Hopelink's emergency services centers disappear entirely.

I look forward to a day when few people are hungry, or living in fear of becoming homeless. When demand for our services begins to decrease, and those who now are forced to ask for help have the choices and options most of us take for granted.

Unfortunately, the

increased demand for our services – the safety net and array of programs that enable families in crisis to make progress toward and achieve self-sufficiency – continues unabated since 2008.

Studies show there are more hungry people in America today than at any time in the past 25 years. At Hopelink, demand is still growing at our five food banks – increasing by 12 percent last year, and 47 percent over the past three years.

And it is likely that Hopelink's emergency services centers will soon feel the pinch of another recent cutback in federal funding. Many food and housing programs in King County took a collective hit from a \$1.2 million reduction in the Emergency Food and Shelter Program (EFSP). Hopelink's client services program lost about \$112,000 through this cut.

Our integrated array of programs has helped tens of thousands of people recover from crisis and get back on their feet – often with new skills and abilities that make our services unnecessary in their lives. Yet every day, our emergency services centers see people come through the door who never believed they would need to ask for help. I have heard stories of clients sitting in their cars for an hour or more, trying to find the courage to walk through the door for the first time.

As long as there are those who need our help, Hopelink will be there.

In October, our Redmond Emergency Services Center will open its doors at a new, larger location, at 16725

Cleveland Street. After two decades as a founding partner at Redmond's multi-tenant nonprofit Together Center, formerly the Family Resource Center, Hopelink's administrative office and emergency services center simply outgrew that space.

Changing needs and growing demand made the move necessary, but we also benefitted from the current economic climate that enabled us to find a suitable space at a reasonable cost.

The new, larger building will enable us to expand our service offerings – adding adult education and training classes and our family development program – thus providing more fully integrated emergency services and asset building services for Redmond clients. The new facility also will make it easier to manage inventory, so that the 1,000-plus clients served by the Redmond food bank every month will have access to the freshest food possible.

This new space has a dedicated parking lot and better access to public transportation, and the additional room will enable us to grow with the needs of Redmond, consistent with our strategic plan. Working to provide

“Come see our new Redmond Emergency Service Center when it opens for business on October 3. We would be proud to show you how we're improving to better meet the needs of our clients and community.

better, more efficient services is the silver lining as we adjust to greater demand.

The decision to leave the Together Center was not an easy one. That location in the heart of Redmond served us well for many years, and the cutting-edge concept of a single site serving a variety of human services needs is something we are proud to have helped build.

Still, we are excited about the future, and the opportunity to serve the Redmond community in positive new ways. This new facility gives us room to grow and adjust to changing needs. For our supporters, that means greater efficiency and the best possible use of funding – now, and into the future. And for our clients, it means better access to necessary services during a time when it is needed most. Come see our new Redmond Emergency Service Center when it opens for business on October 3. We would be proud to show you how we're improving to better meet the needs of our clients and community.



Hopelink Turkey Trot Expands to Include Fun Run

On Sunday, November 20, Hopelink will hold its annual Turkey Trot in Kirkland to raise money to help low-income families in east and north King County get through the challenging winter months.

New this year is a separate fun run on the 5K (three-mile) course for those interested in a faster pace. Walkers can choose a more leisurely stroll along the same course, which runs from Marina Park to Carillon Point and back.

Turkey Trot proceeds help Hopelink provide emergency services for low-income families in our community during a time when they face added seasonal pressures – such as higher home heating costs and additional food needs.

We are very grateful for the assistance of the following businesses in putting the event together.

Falco Sult
Lake Washington Physical Therapy
One Eighty
Serious about Fitness

Registration and festivities for both events will begin at 10:00 AM. The fun run will start at 11:00 AM, and the walk will begin at 11:30 AM. Participants may register online at www.hope-link.org. The pre-registration fee (before November 18) is \$20 per person, or \$15 per person for teams of four or more. Day-of-event registration is \$25 per person and \$20 per person for teams. Strollers and pets are free. All pre-registered participants will receive a Hopelink Turkey Trot 2011 T-shirt. Runners and walkers alike are encouraged to seek pledges, and those who collect donations of \$100 or more will be entered in a drawing for prizes.

For more information or to register, go to www.hope-link.org and click on the Turkey Trot logo.

turkey
11th
annual
trot

Presented by
Fred Meyer

Sunday
November
20

11am • marina park • kirkland

Top Chef Colicchio Talks About “What It Takes” At Hopelink Luncheon

Colicchio will address efforts to ensure that all children have access to healthy and adequate food.

Master Chef, television personality and philanthropist Tom Colicchio will be the keynote speaker at Hopelink’s 16th annual Reaching Out Benefit Luncheon, Monday October 17th at Bellevue’s Meydenbauer Center.

The Reaching Out luncheon aims to raise \$1.2 million to enable Hopelink, the largest social services agency serving east and north King County, to continue meeting the needs of families who are struggling during the current recession – particularly in light of state and federal budget cutbacks.

Winner of the James Beard Foundation’s coveted “Outstanding Chef” award, Colicchio is a 30-year veteran of the restaurant industry. The New Jersey native has three cookbooks and more than a dozen restaurants to his credit, but Colicchio may be best known for his role as head judge on Bravo TV’s hit reality cooking series “Top Chef.”

Recently, Colicchio has become an outspoken advocate of efforts to ensure that the nation’s children

have access to healthy school lunches, testifying before Congress on reauthorization of the Child Nutrition Act.

“There can be no better investment – no better stimulus to our economy – than feeding this nation’s children healthily and well,” Colicchio told the House Education and Labor Committee. “Providing the building blocks for millions of kids to grow and develop as they should will mean a population of robust and productive adults, and a more competitive America.

“If we give the kids in this country delicious and nutritious food, we will instill in them a lifetime preference for healthy eating that will translate into vast savings in health care costs down the line.”

Colicchio also spoke about his mother, Beverly, who was a cafeteria supervisor in Elizabeth, New Jersey, where he grew up. With nearly 70 percent of the students qualifying for free or reduced price breakfast or lunch, Colicchio said that often the meals his mom served those kids was the only food they got all day.

“There can be no better investment – no better stimulus to our economy – than feeding this nation’s children healthily and well, Providing the building blocks for millions of kids to grow and develop as they should will mean a population of robust and productive adults, and a more competitive America.”

Presenting Sponsors

Comcast



Premier Sponsor

Treasures from the Sea

Signature Sponsors

COSTCO WHOLESALE



Lead Sponsors

FedEx

BOEING

Chaplin's Bellevue Volkswagen

STAG TO NOLES

Expedia

Major Sponsors

Chef's Request

Nintendo

INTELUS

UNIVAR

Seattle Childrens

OVERLAKE Hospital Medical Centre

Dave Wright Transline LLP

Table Sponsors

- Amerigroup
- Bank of America
- Banner Bank
- Boston Private Bank & Trust
- Evergreen Healthcare
- Eastside Emergency Physicians PLLC
- Fairfax Hospital
- Farmers Insurance
- Freestone Capital Management Charitable Foundation
- HomeStreet Bank
- K & L Gates
- Lane Powell P.C.
- One Eighty
- Neiman Marcus
- Nordstrom
- Postal Express
- Puget Sound Energy
- Quadrant Homes
- Summit Accounting
- Symetra Financial
- Union Bank
- Wells Fargo

A passion for cooking came early for the chef. He spent his childhood immersed in food, spending time in the kitchen with his mother and grandmother. It was his father, however, who suggested he make a career of it. After teaching himself how to cook, Colicchio made his kitchen debut at age 17 at Evelyn's Seafood Restaurant in Elizabeth, New Jersey. In July 1994, Colicchio and business partner Danny Meyer opened Gramercy Tavern in Manhattan. He opened his first 'wichcraft – a sandwich shop – in New York City in 2003.

Colicchio and his restaurants have a history of giving back to the community, including generous support for programs that help hungry families. He serves on the Food Council of City Harvest – the world's first food rescue organization – which helps feed more than 300,000 hungry New Yorkers every week. Colicchio also is a member of the Culinary Council of The Food Bank For New York City. Shortly after the September 11 attacks, he joined a volunteer army serving food to rescue workers at Ground Zero.

Colicchio's activism runs in the family. In 2010, Colicchio and fellow celebrity chef Mario Batali co-produced *Hungry in America*, a film that details the struggles faced by thousands of Americans who go hungry each day. The film was co-directed by Colicchio's wife, Lori Silverbush.

"In a country as wealthy as ours, it's amazing that so many people are going without," Silverbush said. "Forty-nine million people experience hunger in this nation, 17 million of which are children. The effect on the productivity of our society is extremely negative. And it's largely due to mismanagement of resources rather than scarcity."

The production shines a light on the history and causes of the country's hunger crisis; asking why a nation that could provide access to inexpensive and healthful food for all has failed to do so.

"This film is the centerpiece in a multimedia campaign against hunger," Silverbush says. "People need to know that this problem can truly be solved if it's dealt with correctly."

Hopelink President and Chief Executive Officer Marilyn Mason-Plunkett believes Colicchio's presentation will inspire his audience to look at hunger in a different way – as a critical issue for society as a whole.

"Tom's commitment to doing what he can to improve child nutrition is significant," Mason-Plunkett said. "We know that many children who go to school hungry have difficulty concentrating in class, which puts them at a considerable disadvantage on the learning curve. Ensuring that everyone in our community has enough to eat is not only the right thing to do, it is the smart thing to do."

Last year, 6,600 families were helped through Hopelink's five food banks, up 12 percent from the



previous year, and rising sharply (47 percent) over the past three years. Money raised during the 2011 Hopelink Reaching Out Luncheon will help enable the organization, one of the largest community services agencies in the Pacific Northwest, to continue serving low-income and homeless families, seniors and people with disabilities in east and north King County.

The Hopelink Reaching Out benefit luncheon will be held on Monday, October 17, 2011, from noon to 1:15 p.m. at Meydenbauer Center, 11100 NE 6th St. in Bellevue, WA. Registration begins at 11:30 a.m.

There is no charge to attend the luncheon, but during the program guests will be asked to make a donation in support of Hopelink's services. The suggested minimum donation per person is \$150. Corporate sponsors are significant contributors to this event.

Contact Venetia Vango at 425.897.3703 or by e-mail at venetia@hope-link.org for more information about Hopelink's Reaching Out luncheon, or visit the Hopelink website at www.hope-link.org/lunch.

Part of the Solution

Since 1971, Hopelink has been enriching lives by helping people make lasting change. It is due to the steadfast generosity of our supporters that this work is made possible.

Hopelink would like to thank and honor the individuals and families who have demonstrated their dedication to helping others through their leadership giving. We gratefully acknowledge their gifts and welcome them as members of our leadership donor association, Part of the Solution.



Changing Lives (\$50,000+)

Steve & Connie Ballmer
Lawrence & Mary Ellen Hughes
Nancy McCormick
C.W. & Modene Neely
Charitable Foundation

Building Dreams (\$25,000+)

Ward & Judy Bushnell
Leo & Kathy Notenboom
Anonymous (1)

Lifting Up (\$10,000+)

Walter & Melinda Andrews
Katherine Binder
James & Deanna Claypool
Elaine Coles
Laurie Bennett Ellestad
Richard & Susan Fade
Cathryn Fortune & John Shimer
David Giuliani & Patricia Roven Giuliani
Linda B. Glenicki
David Greschler & Paula White
Michael & Mary Kay Hallman
Kevin & Ann Harrang
Patricia Hobbs
David & Sue Holt
Judith Jesiolowski & David Thompson
David Jones & Maryanne Tagney Jones
Arley & Elin Justice
Leslie & Sean Kelley
Denis & Kimberly Kibby
Dennis & Barbara Knapp
Beth Kopyar & Craig Fujisaki
Terence & Ann Lukens
Terri Olson-Miller & Tom Miller
Sally A. Nordstrom
David & Valerie Robinson
The Barbara & William
Rosenthal Family Foundation
Walter & Pauline Schlotterbeck
Jim & Bet Schuler
Patrick & Dianne Schultheis
Peter & Carol Stewart
Patty Stonesifer
Paul Stredwick & Tina Dixon
Anonymous (3)

Reaching Out (\$5,000+)

Estate of Marian Arlin
The Becker Family Foundation
Lauren & Gregg Bennett
Sheila & Byron Bishop
Jim & Lynn Briody
Karen & Robert Bunney
Fred & Joan Burnstead
Steve & Donna Burnstead
Ty & Sally Carlson
Kevin & Heather Cramer
Jennifer Davies & Paul Backstrom
Jon & Stephanie DeVaan
Michael & Meredith Dodd
Emer Dooley & Robert Short
Oris & Sylvia Dunham
Todd & Janette Dunlap
Kathe & Greg Fowler
Michele Freed
Stan & Cindy Freimuth
Jo & Dave Gartenberg
Carlene Gaudette
Sheila & Aaron Getz
Andrew & Michelle Goerdel
Michael & Barb Gordon
Mark & Linda Greenlaw
Barbara A. Hagel
Marie Hardy
Alice & York Harris
Nancy Heen
Louis & Patti Marsh
Marilyn Mason-Plunkett
& Richard Plunkett
Marla Mellies & Peter Delaney
Lynn & Steve Mowe
Michael Nesteroff & Kimm Viebrock
David & Sherri Nichols
Mark & Colleen Olleman
Wally Pereyra
Bill Petter
Kevin Phaup & Catherine Wissink
Kellie & Jim Schneider
Ed & Christy Scripps
Sharon & Thomas Sherrard
Michael & Suzanne Sievert
William & Maria Skilton
Roger & April Smith
Hugh & Cheryl Ann Stewart
Steve & DeYonne Tegman
James & Paula Thomas
Christopher Thrasher & Karina O'Malley

Patrick & Cara Tole
Joe & Gail Wenaweser
Peter Wilson & Colleen Kerr
Thomas & Marlene Wissler
Jeff & Korynne Wright
Robilee & Eric Zocher
Robert & Karen Denman
Robert & Carolyn Huffman
Michael & Debbie Margolis
Anonymous (6)

Finding Hope (\$2,500+)

Maryam & Mohammad Baghai
Donald & Maxine Barnard
Randy & Stefanie Beighle
Nancy Bick & Dwight Krossa
Arden & Rebecca Blackledge
Mary Brisson
Kevin & Teresa Brown
Timothy Burner & Camille Gearhart
Joe & Ellen Buskirk
Jay & Rebecca Buxbaum
Douglas & Patti Byers
Peter & Marianne Caputo
Alan & Janan Carter
Sung-wei Chen
Van & Claudette Christensen
Edward & Amy Conti
Jeremiah Cox
Chris Douglas
Cedra DuFlon-Heide
Jeffrey & Karen Edwards
Jonathan & Karen Edwards
Randy & Christina Erickson
Mark & Sally Esser
Lewis D. Fink
Gina & Michael Fisette
Rick Forbes
Ulrich & Nona Ganz
Lauren Gardner
Russell & Rhonda Garrison
Andy & Lori Glass
Sally & Jerry Gregg
Anne Hamilton & Richard McClung
Jack Heath
Craig & Linda Hendrickson
J. W. Hoff
Torrey & Claire Hoffman
Bruce & Vicki Holliday
Michael Hopcroft
Courtney House

The significance of these leadership gifts will be manifested in many ways

...the quiet elation of a middle-aged man learning to read and getting a job of which he can be proud

...a young mother feeling relieved that, even with the downturn of the economy, she will not have to choose between feeding her family and paying her rent

...young children not experiencing the burdens of poverty, forced to grow up well beyond their years

We invite you to help people make lasting change by becoming a part of the solution and making a leadership gift to Hopelink today.

Sincerely, Cathi and Ken Hatch, Co-chairs

Gwen Houston
Derek & Karol Jamison
Orlay Johnson & Shirley Kronheim
Cynthia & Jay Kasin
Debi Kirkpatrick
Edward Ladd
Doug Laundry & Eva Fekete
Matthew & Barbara Lepage
Janice Levis
Joseph & Cathy Jo Linn
Mark & Mirjana Lippard
David & Melinda Littrell
David & Charlotte Lomet
Joseph & Mary Beth Long
Matthew Loschen & Gretchen
Freed Loschen
John Manferdelli & Catherine Stricklin
Steve & Meriha Mantle
Doreen Marchione
Liz Marx
Dawn Matte
T. J. McGill & Suzanne Sinegal McGill
Krishnan & Nina Menon
Theodore & Loye Misselwitz
Marianne & Mark Mowat
Linda & Cameron Myhrvold
Robert & Marilyn New
Lisa & James Nordstrom
Wendy Norman
Earl & Barb Overstreet
Michael & Hwa Park
Mike & Stacy Peronto
Diego Piacentini & Monica Nicoli
Dana Pigott
Mary Pigott
Alice Portz & Bradley Smith
Betty J. Proctor
Jean L. Ross
Daryl & Mark Russinovich
Rodney Rutherford
Caryn & Brian Ruud
George Sadlier
Joe & Judy Sambataro
Terri & Kevin Sanders
Theiline & Douglas Scheumann
Klaus & Marion Schutz
Audrey Sellman
Barry & Alison Shaw
Heather & Steve Singh
Craig Staats & Judy Ronningen
Paul Strisower & Midori Chan
Bruce & Mary Sult
Scott & Catherine Swanson

David & Essie Swanson
Mark Sweeney
Christy & Jason Terpsma
Shelley & Kevin Turner
Tom & Jane Vimont
Thomas & Jeanne Walker
Tom Burns & Julia Walters-Burns
David & Romayne Watt
Fred Wiesinger
Bob & Peggy Wilkerson
Steve & Tami Wilson
Kathleen & Clyde Wilson
Michael & Elaine Bair
James Scott
Anonymous (3)

Helping People (\$1,000+)

William & Debra Adams
Terry & Kellie Adams
Makarand & Lalitagauri Agashe
Douglas Alexander
Andrew & Christi Allison
Patrick & Meghan Altimore
Mary F. Anderson
Jane & Brian Andrew
Jill & James Angelo
Heather Arbon
Matt Armstrong & Karen Richards
Bob & Clodagh Ash
Samia Ashraf & Lewis Davidson
Robert & Patricia Atkinson
Carolyn C. Baker
Andrew & Dawn Baldwin
Jeff & Mary Bander
Morgan & Sarah Barbour
Jimmy & Patty Barrier
Andrew Bartkus
Richard & Georgette Barton
John & Deborah Batjer
Julie Battermann
Bruce & Suzanne Baugh
Maria & Douglas Bayer
Trudi J. Beach
Danny & Leslie Bean
Jay Beatty
Michelle M. Becker
Robert & Marilee Beckes
Linda & Bob Benson
Viola Benson
Howard & Sandra Berman
Jonathan & Lauren Biard

Beth Billington
Denise Black
Deborah Black
Jeff & Tana Blake
EJ & Jeremy Blanchfield
Andrew & Teresa Bliss
Jessica & Tim Blixseth
Dr. & Mrs. Lewis C. Blowers
Karen Bonnell
Dennis & Trina Bortko
Scott & Jane Boulware
Carl Bradley
David & Janet Bradshaw
Keith Brewe & Tracy Goggio-Brewe
Carol & Daniel Brewer
Theresa A. Bronson
Jeffrey & Susan Brotman
Tonia & Matthew Brown
Paul & Linda Burg
Christopher & Debra Burges
Robert & JoAnn Burgess
Janet & Frederick Burnstead
Nicole Candiano & Bruce Johnson
Nancy Cannon
James Cardillo & Patricia Kern-Cardillo
Jim & Melody Carney
Michael W. Carr
Joseph R. Carroll
Grant & Emilie Castle
Michael & Carey Cavaliere
Mallikarjun Chadalapaka
Christine Chai
Kent & Barbara Chaplin
Derek Cheng
Andy Cheng
Joel Cherkis
Su Choi
Trinese & Rodney Clark
Jason & Debbie Clark
Eugene C. Coan
Perry & Valarie Cole
Rick & Bonnie Collette
Karen Collins
Neil & Ashley Collins
Ari Consul
Vickie Cooley
Bill & Judy Courshon
Barbara & Donald Coyner
Philip & Karen Cramer
Catherine & Medford Crawford
Reidun Crowley
Kathy & Bruce Culver
Jody Cunningham & Mark Mennella

Carolyn & Don Currie
Joseph Dadzie
Jack & Kathleen Dando
Alison Danz
Eric Darnall & Susan Lohman
David & Jane Davis
Matthew A. Delong
Robert Devine & Karen Edgerton
Lovely Dhillon
Mark & Julie Dickison
Ellen & Darryn Dieken
Laura & Blair Dillaway
Kerry & Richard Dillhoff
Hiromi Dipboye
Leo & Judie Dobner
Edward & Miriam Dobrick
Joanie Dolsen
Elena Donio & Shanen Boettcher
LaVonne Dorsey
David Dorwin
Robert & Julia Dreyfoos
Dale & William Dumond
Loren Dunn & Erin Sheridan
Lewis & Susan Edelheit
Jon & Deanna Egge
Brandon Ehrlich
Ben & Nancy Ellison
Marianne M. Emerson
Nancy & Al Erisman
Renee Ewing
Walton Fangman & Janice Flynn
Mark & Victoria Fanning
Bernice Fenn
Joel R. Ferguson
Mary Fernandez
Don & Dorothy Ferrel
Douglas & Caroll Ferry
Susan M. Finn
Lydia & Rick Flora-Barlow
Harold & Marilyn Fogelquist
Jackie Frank
Annette Conrads-Frank & Tobias Frank
Robert Friedman & Anita Davidson
Joseph & Karen Friend
Michael & Karen Friend
Joanna Fuller
Kevin & Sarah Funk
Kari Furse & Clarissa Gordon
H. G. & Carol Gaiser
Steven Gallagher & Pat Molnar
Rosalie Gann
Gretchen Garth
Jim & Susanne Garvey
Dick & Michelle Gidley
Randy & Terry Gilliam
Mary & William Ginn
Jay & Sara Glerum
Allan Goldman & Judith Stone-Goldman
Jeffrey Goldstein & Jaclyn Roberts
Jorge & Rosario Gonzalez
Rona & Harold Goodman
Yukako Goto
Pierre Grand
David Grant
Steve & Debra Grant
Mark & Kimberlie Gray
Bud & Sue Griefff
Thomas & Cherri Gruver

Felicia Guity
Russell & Diane Haehl
Jeffrey & Lucia Hagander
Joseph D. Hage
Kari & Scott Hall
Chris & Jodi Hallum
Bob & Jane Hamm
Joseph & Karen Hardiman
Jeff Harrang & Carol Whittier-Harrang
Andrew & Deborah Harris
Richard & Peggy Hart
Sheri & Kevin Hart
Joseph & Elizabeth Harthorne
Patrick & Theresa Harvey
Ken & Cathi Hatch
Jeff & Candy Havens
Daniel & Pamela Hay
Steven Hazlerig
Colleen Healy
Julie Z. Heine
Erik Hendriks & Sung-Eun Choi
Allyson Henry
Samantha & Carter Herness
Andrew & Jennifer Herron
Nora & Greg Hightower
Lynne M. Hill
Andrew Hill
Robin Hiraoo Atani
Kristi Hofer
John & Judy Holder
Rik Holley & Nanci Presley-Holley
Gary Holm
Mary Holm & Arthur Baldwin
Jason Holtman & Margaret Lent
Benjamin Home
James & Joyce Horton
Gayle M. Hoshino
Robert Howard & Denae Bradburn
Keith & Doris Howell
Lois Huber
Mark & Eva Huentelman
Jill & Edward Im
Kent & Jani James
Christopher & Therese Jardine
Rue & Pamela Jenkins
Donna & Steven Jenness
Carla Jensen
Callie A. Jensen
Ginny J. Johnson
Marcia Johnson
Timothy & Judith Johnson
Betsy & Jeff Johnson
Richard & Sarah Johnson
Richard & Aimee Jones
Shannon Jurdana
Steven & Beth Kahn
Diane D. Kallas
Kris Kaminishi & Allan Jones
Steven & Gail Kaneko
Aimee Kanemori
Larry & Karen Karpack
Carl & Corinne Kehayes
Charles & Helen Kester
Eric & Roxanne Kidd
Ron & Clare King
Laura King
Richard Klobucher
& Carol Ganz-Klobucher

Stephen & Mary Eileen Knoff
Phil & Sharon Knowles
Victoria Knutson
Jim Kranick & Gail Tsuboi
Austin & Pamela Kravik
Michael & Gail Kroll
Case & Ann Kuehn
Suzi & Mark Kuenster
Richard Kuhn & Kay Tarapolsi
Alexis & William Laing
Kurt & Tami Lamp
John & Cynthia Larson
Lauren & Daniel Lazar
Sandra LeDuc
Ju hee Lee & Dong Kim
Scott Lee
Rustan & India Leino
Garry & Talli Lind
Tom & Ruthann Litchford
Michael & Janie Litke
Rita & James Litsinger
Frances Lloyd
Shawn Loveland
Aidan Low
Jennifer Lucas & Mike Farmer
Steve & Elizabeth Lucco
Janet & John Ludeman
Will & Robin Ludlam
Stephen & Ellen Lutz
The MacKay Family Foundation
Merrilee MacLean
Jeffrey & Nancy Mandell
Kathy Mann
Dryke & Renae Martin
Larry & Marsha Martin
Dwight & Mary Martin
Josh Mason-Plunkett
Douglas & Leanne Maxwell
Marjorie Mazie
Craig & Susan McCaw
Bruce & Kimberly McDermott
Katherine McKinney, D.D.S.
Gayle McKool
Susan McLain & Steve Persing
Michael & Robin Meiners
Frances A. Meitzer
Cynthia Mennella
Ravi & Catherine Menon
Sharon Meramore
John & Irene Meulemans
Timothy & Beth Mickelson
Thomas & Susan Miller
Dennis & Holly Miller
John & Katie Milne
Laurie Minsk & Jerry Dunietz
Bryan & Priscilla Mistelet
Hemlata & Tejas Mistry
Blair Carleton & Jens Molbak
Walter & Karen Moore
Larry & Kimberly Morris
Jeanne B. Moulds
Carol & Dave Mutzel
Richard Myers
Kirk Myhre
Ava & Lee Nackman
Mette & David Naness
Dave & Sheree Neal
Barrett Nelson

Robert & Kathleen Nerenberg
Eric & Mary Nickerson
Jeannie Nordstrom
Carolee & Bob Nunn
Mary Odermat
Fergus O'Donoghue
Brian & Ellen O'Hara
L. O'Hara & D. T. Nakano
Viki & Frederick Okerlund
Richard & Janet Olin
Kirsten O'Malley
Timothy E. Onders
Len & Rebecca Oorthuys
Vincent & Jacqueline Orgovan
Gregg & Margie Ose
Anne Otten & James Adcock
Patricia Paddison
John & Becky Panesko
Nancy & Victor Parker
Mark & Kimberly Parris
Sun Pastor
Todd & Julie Patrick
Diane Paukstis
Andrew & Carol Pearson
Lee & Terri Pelekoudas
Raymond & Marilyn Penrose
Margery Perdue
Roger & Lynelle Perrin
Dan & Rosalinda Petersen
Steven & Susan Petitpas
Delgene & Cordelia Phillips
Justin Pietsch
George Pigott & Barbee Tucker-Pigott
Dina & Paul Pigott
José Piñero & Maru Zamora
Gerald & Jane Pittenger
Brian & Lora Plaskon
Jason Popp
Beth & Rick Post
Susan & James Powell
David & Lindsay Price
John & Priscilla Privat
John & Melody Pryor
Karol Zadora-Przylecki
Emilie & Raghvinder Purhar
Gordon & Gretchen Raine
Lavina & Nikhil Rao
Gail & Marc Rasmussen
Amy Ratcliffe & Paul Emerson
Leonard Raymundo
Dana & Vickie Rekow
Rao & Satya Remala
Richard & Linda Mae Rethke
Ronald & Merle Rice
Kevin Rice
Dave & Sharon Richards
Peggy & Robert Rinne

Matthew Roberts & Wady Milner
Mark Roberts & Maria Valdesuso-Roberts
Katherine Robichaux
The Robidoux Foundation
Michael & Marcia Rodgers
Oliver Roll & Nasha Fitter
Susan Ross
Robin Rothe & Tom Wright
Joy A. Roush
Wayde Routon & Helen Banks Routon
Katherine & Michael Royal
Bob & Beth Rudolph
Paul & Diane Rutherford
Randy Rutledge
Phillip Rutschman
Jacob Sabulsky
Rob & Joan Sample
Oscar & Nancy Scarborough
Adam & Catherine Schaeffer
Bonnie & Meredit Schoolcraft
Peter Schuette
Michael Schuh & Jennifer Elden
Tanya Schulte & Robert Dimpsey
Scott Scrivner & Annie Young-Scrivner
Robert & Sandra Seidensticker
Paula Senior
Larry Setlow & Sara Hunt
Craig & Meredith Shank
Robert & Kris Shelley
Ron & Eva Sher
Yumi & Craig Sherman
Elizabeth Shipman & Michael Allen
Jack Showalter
G. & L. Shultz
Bharat Shyam
Robert & Sandra Sifferman
Jill & Rajeev Singh
Sandeep & Sukriti Singhal
Glen & Phyllis Sloan
Richard Smith
Jamie Solo
Neil & Dorothy Sprague
Anne R. St. Germain
Thomas Staggs & Kay Eder-Staggs
Shawn Stallworth
John & Joan Starling
Jerry & Billie Steiert
Gretchen B. Stengel
John & Sherry Stilin
Donna & Randy Storm
Vanessa & Robert Strickland
Andrey Stroilov
Jenna Strully & Brian Strully
Gretchen Stuenkel
Barbara Sumey
Ally & Scott Svenson
M3 Sweatt

Agnes & Charles Sweeney
Jerry & Karen Syrcle
Serge Tchikanda
Sandy & Jeff Teper
Lauren & Lance Thomas
Richard & Barbara Thompson
Rick & Jean Thompson
Suzanne Tocco
Gary & Darcia Tudor
Marybeth & Barnett Turk
Justin & Heather Uberti
Ann Van Sickle
Verney Family
Michael & Bunny Vena
Nancy & Bill Wieser
Kent Vincent
Jim & Pat Voelker
Jill F. Wagner
Linda Wall
John & Kristina Wayland
Kathleen Weber
David & Marsha Weil
Marie E. Weiler
William & Judy Weinberger
Frans & Elizabeth Wery
Jason & Kelly Wescott
Diane & Gary West
Douglas & Cynthia Wiese
John & Margaret Williams
Jan Williams
Sterling & Melinda Wilson
Christopher Wilson
Karen Wood
William & Carol Wrenn
Douglas Wyatt & Maureen Stone
Cynthia Wyckoff
Paul & Dori Yang
Robert Zemke
Ed & Lisa Zigweid
Laura & Chris Zimmerman
Kathryn Zufall
Anonymous (25)

This publication of our leadership donor association recognizes gifts from individuals whose cash contributions have totaled more than \$1,000 during the 2010 calendar year, or from January 1, 2011 through June 30, 2011. Pledges are recognized for the full amount in the year that the pledge was made. Subsequent pledge payments that occur in the following year, or later, are omitted. Every effort has been made to correctly list your name, but if we have it wrong, or you want to make a change, please contact Kendra Hukill at 425.897.3709. We are equally grateful to the many individuals, businesses, and organizations not listed above who have also given cash and/or in-kind contributions to Hopelink over the past year.



Government Funding Sources

FISCAL YEAR 2010

Federal Government

State of Washington

King County

Local Governments including:

- City of Bellevue
- City of Bothell
- City of Issaquah
- City of Kenmore
- City of Kirkland
- City of Redmond
- City of Sammamish
- City of Shoreline
- City of Snoqualmie
- City of Woodinville

Fiscal Year 2010 Foundation Supporters

\$100,000+

- Microsoft Corporation - Community Affairs
- Paul Allen Foundation

\$50,000+

- Bacon Family Foundation
- Boeing Company Foundation
- Medina Foundation

\$20,000+

- Byron & Alice Lockwood Foundation
- JP Morgan Chase
- The Norcliffe Foundation
- Seattle Foundation

\$10,000+

- Attorney General of Washington
- Fred Meyer Fund
- Nordstrom
- Puget Sound Software
- Redmond Rotary Foundation
- Wells Fargo Foundation

\$5,000+

- Elizabeth A. Lynn Foundation
- RealNetworks Foundation
- Crane Fund for Widows and Children
- Kirkland Firefighters
- Eastside Community Aid Thrift
- Foster Foundation
- Fletcher Bay Foundation
- Praise for Today Foundation

\$2,500+

- Bellevue Rotary Foundation
- Charis Fund
- Moccasin Lake Foundation
- U.S. Bancorp Foundation
- Union Bank of California

\$1,000+

- Cooper-Levy Charitable Trust
- Eulalie Bloedel Schneider Foundation
- Harrington-Schiff Foundation
- Summit Family Foundation
- Wyman Youth Trust

The Business Alliance

We would like to take this opportunity to thank our featured Business Alliance partners who have given \$1,000 or more during the 2010 fiscal year. Every effort has been made to correctly list your name, but if you find an error, please contact Kathleen McGill at 425.869.6029. We are equally grateful to the many businesses not listed that have also generously supported Hopelink through cash and/or in-kind donations.

Presenting Partner (\$100,000+)

Microsoft Corporation

Platinum Partners (\$50,000+)

Comcast
Expedia, Inc.
Odyssey Enterprises, Inc
The Seattle Times

Gold Partners (\$20,000+)

Amazon Fresh
Costco Wholesale Corp.
First Tech Federal Credit Union
Intelius, Inc.
Kemper Development
Metropolitan Market
Nintendo of America Inc.
The Boeing Company
Univar USA Inc.
Valve Corporation

Silver Partners (\$10,000+)

Chaplins Bellevue Volkswagen
Concur Technologies Inc.
FedEx
Ford/Hyundai of Kirkland
Seattle Children's Hospital
Sterling Realty Organization
Tecplot, Inc
The Grainger Foundation
The Menon Group Inc.

Bronze Partners (\$5,000+)

Allstate Insurance Company
Bank of America
Banner Bank
BECU
Boston Private Bank & Trust
Celebrated Chefs
Davis Wright Tremaine
Fred Meyer Fund
Group Health Bellevue Medical Center
Intellectual Ventures
Iron Mountain
Labor Ready, Inc
Lakeside Industries
Pacific Construction Systems, Inc.
Puget Sound Energy
Schnitzer West
Symetra Financial
Uwajimaya
Wells Fargo Foundation
Whole Foods

Partners (\$2,500+)

Accents et cetera Gift Baskets, Inc.
AvalonBay Communities, Inc.
Bob Byers Ravenna Volvo
Bookey Consulting, Inc.
D.A. Davidson & Co.
Eastgate Mobility Inc
Eastside Emergency Physicians PLLC
Freestone Capital Management
Charitable Foundation
HomeStreet Bank
InfoSpace, Inc
K & L Gates
Laird Norton Tyee, LLC
Lane Powell P.C.
Mowat Construction
Nordstrom

One Eighty
Pediatric Associates
Redmond General Insurance Agency, Inc.
Trade Tech
Union Bank of California
Washington Federal.

(\$1,000+)

Allyis
AT&T
Carillon Properties
Coinstar
DIRECTV Sports Networks
Door to Door Storage
Emerald Heights
Emergency Physicians at Overlake
Enterprises International Inc
Evergreen Healthcare
Evergreen Sun Enterprises Inc.
Farmers New World Life Insurance
Fluke Metal Products, Inc.
FM Global
Friends of Ferrari
Give Something Back Inc.
Innis Arden Community
Noetix
Paragon Media
PCL Construction Services
Perkins Coie
Quadrant Homes
Rainier Welding Inc.
Signature Landscape Services Inc
Stix To Go, Inc.
Taco Time
The AK Group LLC
The Woodmark Hotel
Washington Dental Service
Waste Management
Wilson Sonsini Goodrich & Rosati Foundation
Windermere Real Estate
Winterbauer & Diamond P.L.L.C
Zetron

hopelink

P.O. Box 3577

Redmond WA 98073-3577

Nonprofit Org.
U.S. Postage
PAID
Seattle, WA
Permit No. 2389

If the idea of transforming a community excites you ... if you love helping your neighbors ... if you seek a way to forge opportunities for those in need well into the coming decades ... then you'll want to learn more about Hopelink's Future of Hope legacy circle. Please contact Jason Puz, Development Officer, for information on how you can include Hopelink in your will or estate plans. Call 425.869.7835 or email jpuz@hope-link.org